

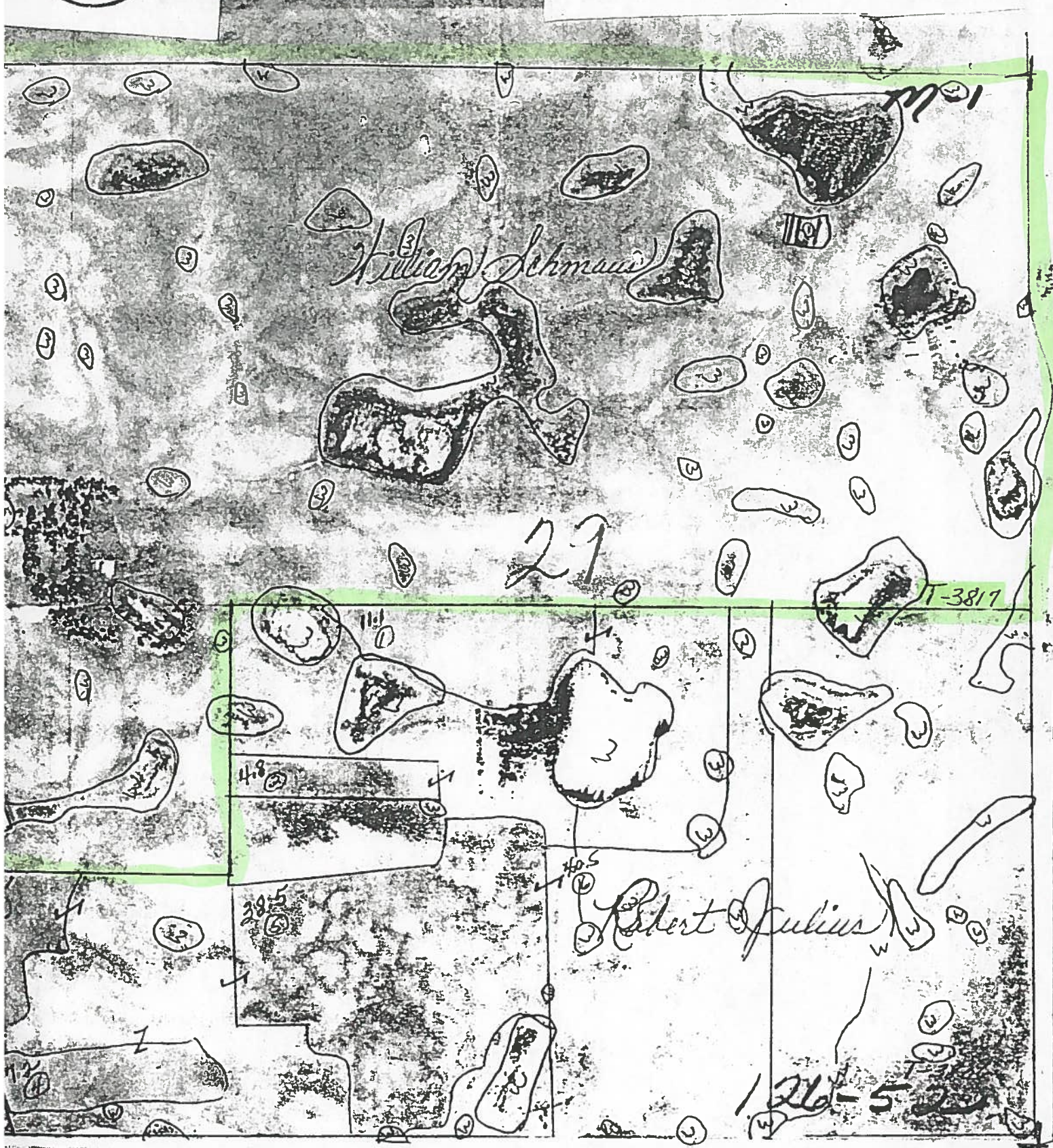
**OFFICIAL WETLAND
DETERMINATION FOR THIS
TRACT ONLY.**

SYMBOL KEY

- (W) Wetland
- (FW) Ditched or tiled prior to 12-23-85 but still wetland
- (PC) Converted Wetland prior to 12-23-85
- (CW) Converted Wetland after 12-23-85
- (-----) Ditched prior to 12-23-85
- (-----) Tiled prior to 12-23-85
- (-----) Ditched prior to 12-23-85

land

EFFECT
MAP



m-1

BP

NOT TO SCALE

T-3817

A-13

William Schmaus

NC

29 grassland easement

T-3806

1-16.1 HEL

2-4.8 HEL

NC

Robert Julius

NC

3-7.2 HEL

NC

4-7.2 HEL

5-38.5 HEL

6-40.5 HEL

126-52

T-3881

A-13

Deloris Schneider

4b

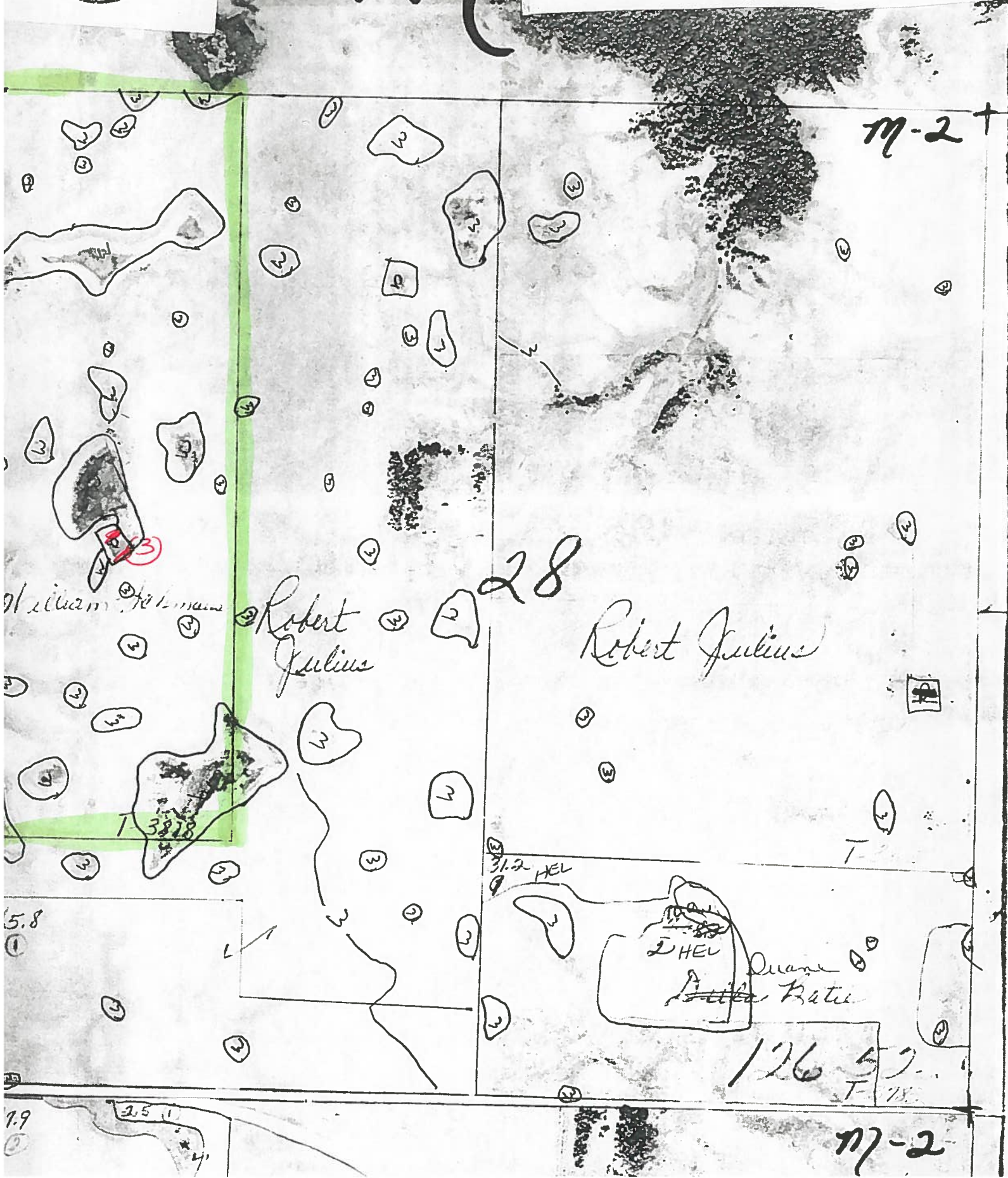
NC

SCOPE & EFFECT MAP

NOT TO SCALE

SYMBOL KEY

- (W) Wetland
- (FW) Ditched or tilled prior to 12-23-85 but still wetland
- (PC) Converted Wetland prior to 12-23-85
- (CW) Converted Wetland after 12-23-85
- (---) Ditched prior to 12-23-85



NOT TO SCALE

20747

T-3818

T-3805

B-13

William Schmaus
NC

28
Robert Julius
NC

grassland
easement

NC

T-3783

Duane Batie

10.0

1-31.2 HEL

NC

NC 126-52

1-45.8 NHEL

T-3859

NHEL
125

4-2.9 NHEL

T-3784

B-13

Authorization Form FSA, NRCS, US Fish & Wildlife, & Forest Service Offices

Authorization Form to grant United Country - Advantage Land Company permission to use all documents below.
The land affected by this release of information is located at the lot(s) below:

Legal Description:

→ W 1/2 NW 1/4 & NW 1/4 SW 1/4 Sec 28-126N-52W and the N 1/2 and NW 1/4 SW 1/4 Sec 29-126N-52W Long Hollow Twp. Roberts County SD

1. 156EZ and 578 form RE (Initial) – Please Send
2. Aerial maps of property (COLOR COPY) RE (Initial) – Please Send
3. Certified Wetland Determination Information/maps/tile RE (Initial)
4. CRP-1/CRP-2C & Conservation plan/Operation Forms RE (Initial)
This release provides FSA the authorization to release information pertaining to the CRP contracts that are on the farm. Current contract information relating to all information found on the CRP-1 contract. This release also authorizes FSA to provide all historical payment information for the CRP contracts that are in place. Historical information including, but not limited to, all payments made on the CRP contract including CRP annual payment, cost-share payments and any incentive payments made. If requested, FSA may also release the cost of terminating the CRP contracting which would include the repayment of all payments received, interest on the payments and liquidated damages.
5. Any Easment/Restrictions forms RE (Initial) – Send If Pertains
6. CCC-509/CCC-509b/CCC-902I forms RE (Initial) - Send Only upon request
7. Soils Map/Productivity of Soils RE (Initial) – Send Only upon request

The following fax signature shall serve as an original signature.

Name of Owner(s) William Schmans Trust
 Address 21668 Piedmont Meadows Rd
 City Piedmont State SD Zip 57769
 Signature Rhonda Engel Conservator Date 6/4/2019
 Signature _____ Date _____



United Country - Advantage Land Co.
 510 Main Ave. Ste. 4
 Brookings, SD 57006
 Phone: 605.692.2525
 Fax: 605.692.2526

Send To: Info@advantagelandco.com